

WELCOME!

Segment 2
Public Information Meeting
December 7, 2017



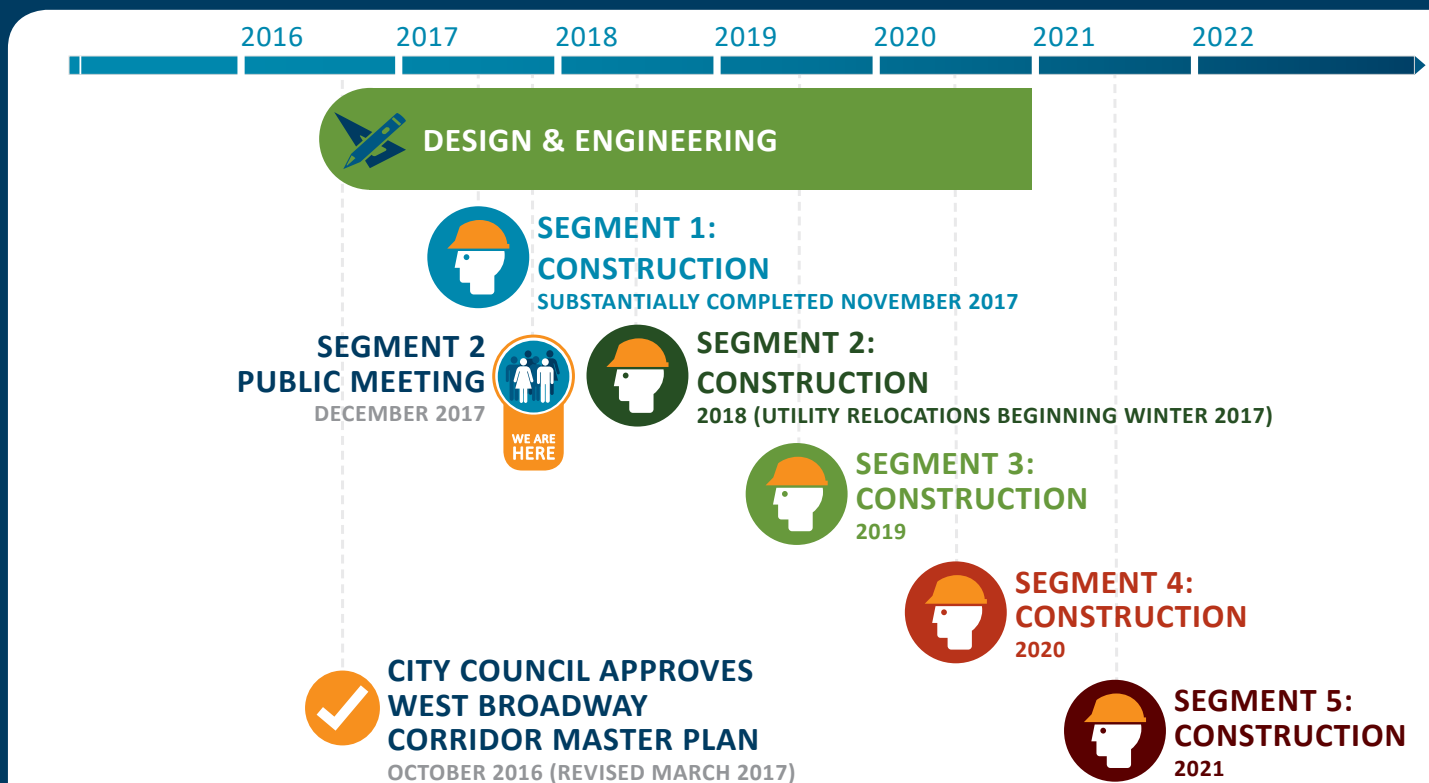
Reimagining the
Gateway to Council Bluffs

The purpose of today's meeting is to present design details on the second segment of West Broadway reconstruction, provide information on what you can expect during construction, and answer questions and receive your input.

PROJECT BACKGROUND

The West Broadway Reconstruction Project aims to preserve and enhance the economic vitality of Council Bluffs by transforming West Broadway into a more viable and aesthetically pleasing transportation corridor for businesses, residents, and the traveling public. Reconstruction of the corridor, which encompasses West Broadway from 36th Street to 15th Street, will be completed in five segments over five years beginning in 2017. Reconstruction will start at the west end and continue east.

Design details are the result of a planning process conducted by the Project team on a combination of improvements that satisfy Project goals and objectives. Proposed enhancements will improve traffic and pedestrian safety, as well as the appearance and function of the corridor.



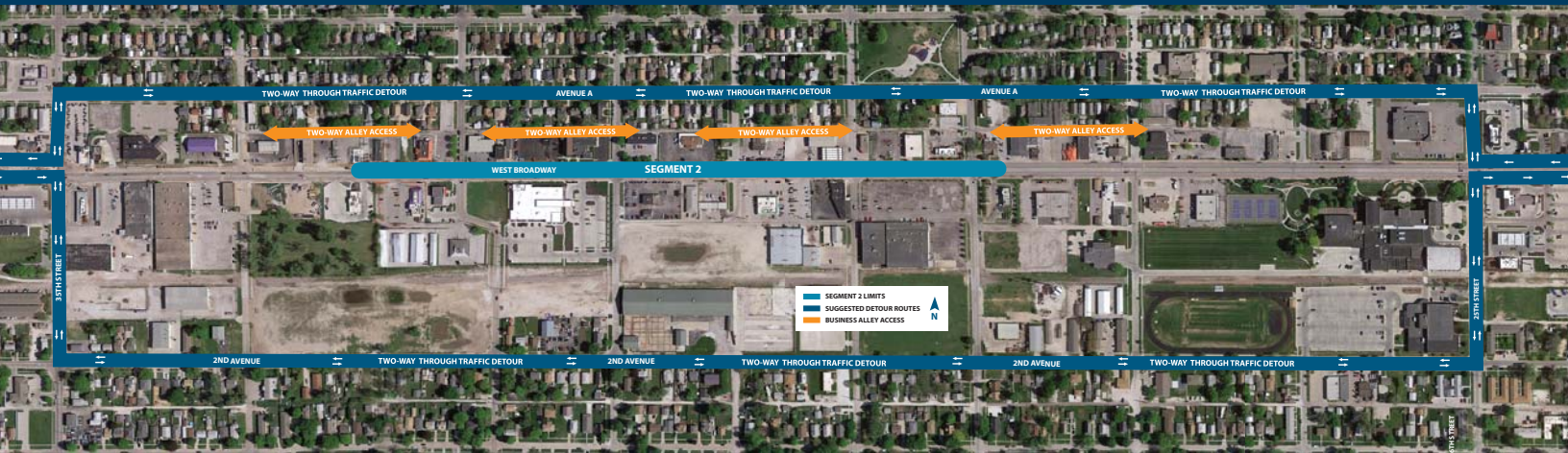
*Dates are subject to change.

SEGMENT 2 RECONSTRUCTION

Prior to the start of Segment 2 construction, Avenue A will be converted to a two-way street from 16th Street to 35th Street to allow for enhanced access during reconstruction. Existing parking will remain on both sides of Avenue A. In April 2018, work on the second segment of the Project is anticipated to begin. Segment 2 focuses on the area from 32nd Street to 28th Street. Construction will be divided into several stages.

Throughout the reconstruction of Segment 2, local West Broadway traffic can access businesses through existing driveways or by using designated alternate routes. Through traffic is urged to utilize the selected detours for the area: those traveling westbound should use Avenue A, while those heading eastbound should take 2nd Avenue.


SEGMENT 2 DETOUR ROUTES



Map from Google Earth

STAY INFORMED

Want to stay informed about construction and potential impacts?

- Sign up for our mailing list - www.WBReconstruction.com
- Follow us on Facebook for real-time alerts 

HAVE QUESTIONS OR CONCERNS?

Email us at info@WBReconstruction.com